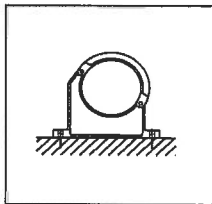


Advised Installation Distance VDL Tube Clamps, Art.code 5.26.****

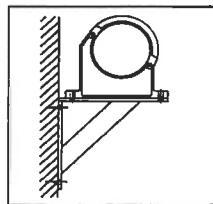
Datum: 01.06.2012

| VDL Art.code | Nominal size [mm] | Advised Installation distance for use with PVC-U PN 10 / 16 tube bij 20° C | | | Advised Installation distance for use with PVC-U PN 10 / 16 tube bij 30° C | | | Advised Installation distance for use with PVC-U PN 10 / 16 tubes bij 40° C | | | Advised Installation distance for use with PVC-U PN 10 / 16 tube bij 50° C | | | Advised Installation distance for use with PVC-U PN 10 / 16 tube bij 60° C | | |
|--------------|----------------------|--|------|------|--|------|------|---|------|-------|--|------|------|--|------|------|
| | | Mounting position: | | | Mounting position: | | | Mounting position: | | | Mounting position: | | | Mounting position: | | |
| | | A/B/C/D | E | F | A/B/C/D | E | F | A/B/C/D | E | F | A/B/C/D | E | F | A/B/C/D | E | F |
| | | [mm] | [mm] | [mm] | [mm] | [mm] | [mm] | [mm] | [mm] | [mm] | [mm] | [mm] | [mm] | [mm] | [mm] | [mm] |
| 5.26.090 | 90 | 880 | 880 | 880 | 748 | 748 | 748 | 616 | 616 | 616 | 528 | 528 | 528 | 440 | 440 | 440 |
| 5.26.110 | 110 | 960 | 960 | 960 | 816 | 816 | 816 | 672 | 672 | 672 | 576 | 576 | 576 | 480 | 480 | 480 |
| 5.26.125 | 125 | 1,020 | * | * | 867 | * | * | 714 | * | * | 612 | * | * | 510 | * | * |
| 5.26.140 | 140 | 1,080 | * | * | 918 | * | * | 756 | * | * | 648 | * | * | 540 | * | * |
| 5.26.160 | 160 | 1,160 | * | * | 986 | * | * | 812 | * | * | 696 | * | * | 580 | * | * |
| 5.26.180 | 180 | 1,200 | * | * | 1,020 | * | * | 840 | * | * | 720 | * | * | 600 | * | * |
| 5.26.200 | 200 | 1,300 | * | * | 1,105 | * | * | 910 | * | * | 780 | * | * | 650 | * | * |
| 5.26.225 | 225 | 1,300 | * | * | 1,105 | * | * | 910 | * | * | 780 | * | * | 650 | * | * |
| 5.26.250 | 250 | 1,300 | * | * | 1,105 | * | * | 910 | * | 1,105 | * | * | 780 | * | * | |
| 5.26.280 | 280 | 1,500 | * | * | 1,275 | * | * | 1,050 | * | * | 900 | * | * | 750 | * | * |
| 5.26.315 | 315 | 1,500 | * | * | 1,275 | * | * | 1,050 | * | * | 900 | * | * | 750 | * | * |
| 5.26.355 | 355 | 1,500 | * | * | 1,275 | * | * | 1,050 | * | * | 900 | * | * | 750 | * | * |
| 5.26.400 | 400 | 1,500 | * | * | 1,275 | * | * | 1,050 | * | * | 900 | * | * | 750 | * | * |

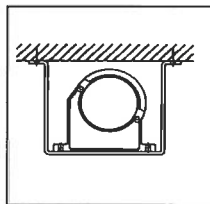
* = Not advised for mounting horizontally to the wall and for ceiling mounting, this is only possible with special support brackets (see drawings B and C).



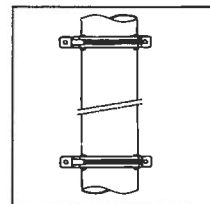
Mounting position: A
Mounted to the floor



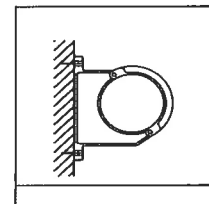
Mounting position: B
Mounting to the wall,
supported horizontally



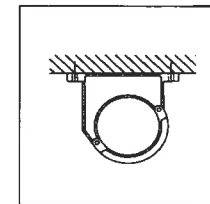
Mounting position: C
Mounting to the ceiling
supported horizontally



Mounting position: D
Mounting to the wall
Vertically



Mounting position: E
Mounting to the wall
horizontally



Mounting position: F
Mounting to the ceiling

Conditions with respect to the above mentioned Advised Installation Distance:

- VDL Tube Clips should be mounted on a flat and stable surface.
In case of the use of C-Rails as support the flat closed side should be used.
In case a VDL Tube Clips should be mounted on the open side of the C-Rail, a steel plate under the VDL Tube Clip has to be positioned, so that the result is again a flat and stable surface.
- In all types of applications reliable fastening materials should be used. Only the application of bolts or screws with a flat surface on the lower end of the head in combination with a washer is allowed.
Bolts and screws with a countersunk head may not be used.
- The mentioned advised spacing is applicable for PVC-U pipes in the pressure rating PN 10 or PN 16, filled with water at the temperature as mentioned. The mentioned spacings are only valid in case of a static load. Dynamic loads which can occur when a pump is started or in cases of opening and closing of valves are not considered and will in praxis make extra support necessary. Also in case of installation of heavy accessories such as valves and filters extra support of the pipe system should be considered.
This goes also for horizontal pipes on which a long vertical pipes are hanged.